

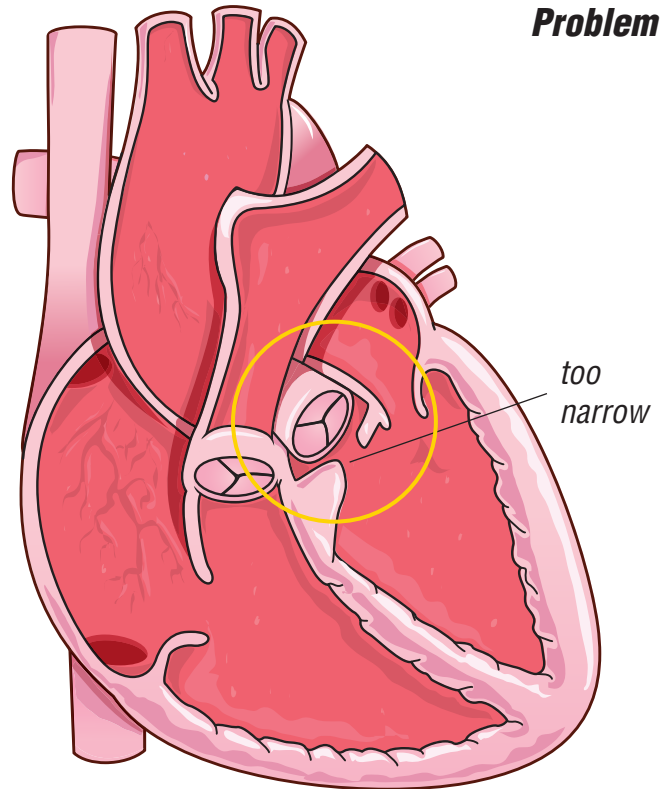
# Aortic Stenosis (AS)

## Subaortic Membrane

A narrowing occurs between the bottom left heart chamber and the main artery to the body (aorta). The narrowing is just under the aortic valve (subaortic membrane). The narrowing causes a reduced amount of blood carrying oxygen to the body. It also makes the bottom left heart chamber overwork pushing against the narrowing.



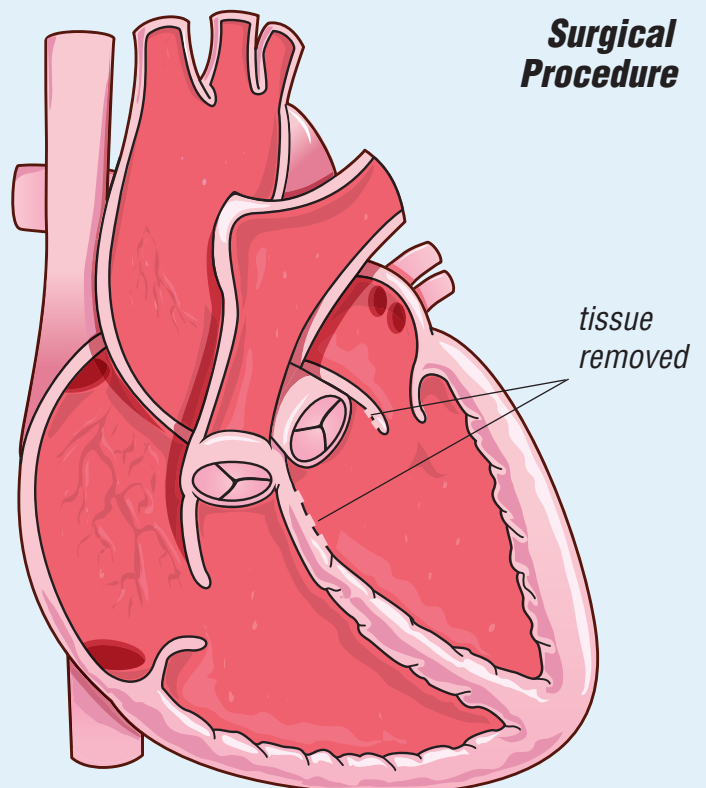
### Problem



Subaortic membrane is caused by a growth of tissue under the aortic valve. Surgery is done to remove the tissue (membrane) so the valve will continue to function.



### Surgical Procedure



The operation to repair aortic stenosis is done with a median sternotomy (chest) incision.