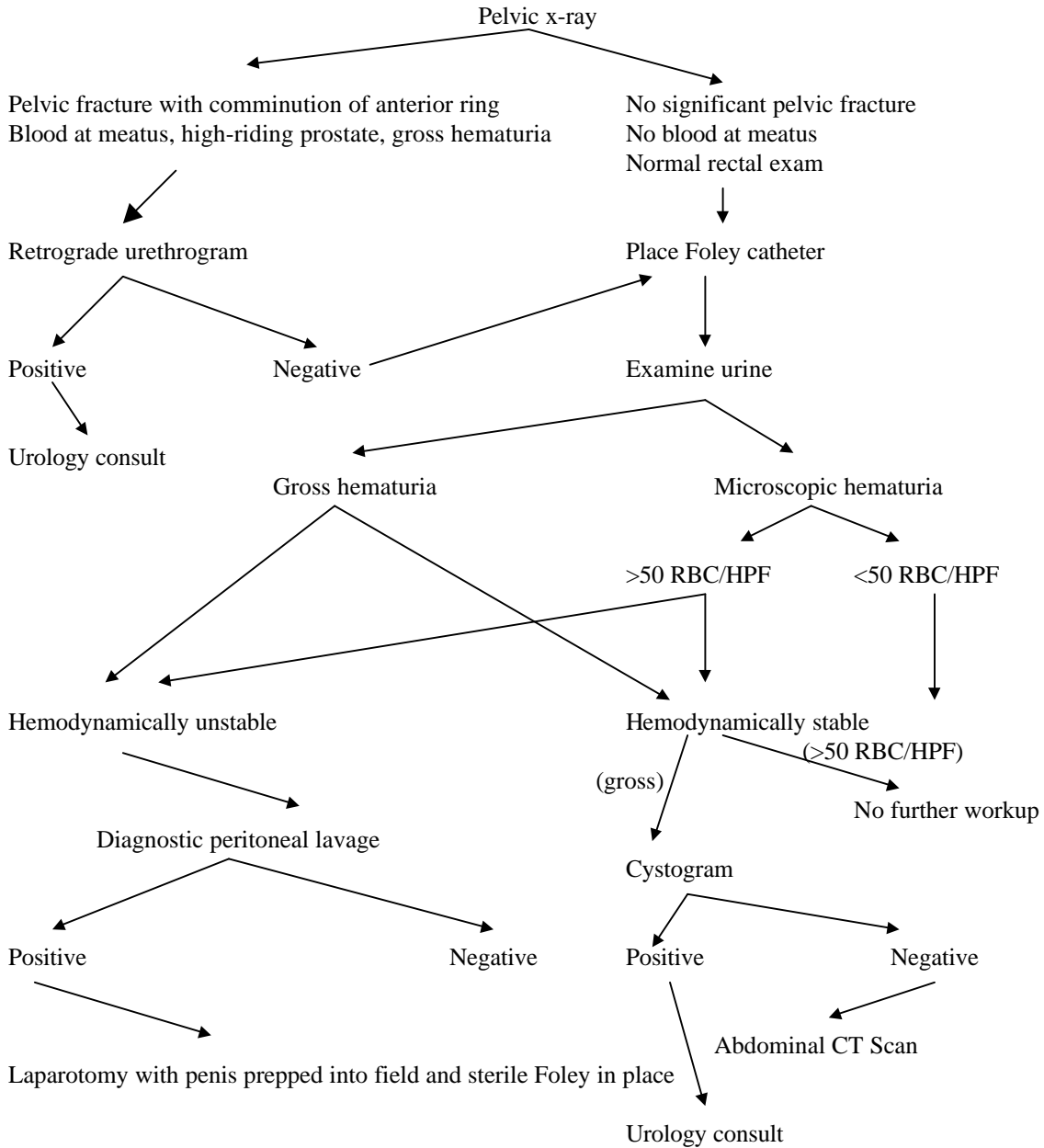


Hematuria
Practice Management Guideline
UVA Trauma Service
UVA HSC 3/99



This guideline is strictly a "suggestion" and an educational tool for the management of the trauma patient. In no way is it intended to be a limited approach to the problems presented to the trauma team. Obviously, many interpretations of this guideline can be made which is quite appropriate to trauma care in individual circumstances. The approach to each patient should be individualized to fit the particular needs of the patient and the available resources of the trauma team.