

Reaching the Medical Center

Directions from the North

From U.S. 29 South: Once you enter Charlottesville, continue straight on U.S. 29, which becomes U.S. 29 Business/Emmet Street just past a Best Buy. At the eighth traffic light after passing the Best Buy, bear left onto Jefferson Park Avenue (JPA). At the third traffic light on JPA, turn right on Lee Street.

Directions from the East or West

From Interstate 64, take exit 118B (U.S. 29 North). Take the first exit (U.S. 29 Business). At the end of the exit ramp, turn right onto Fontaine Avenue. Stay straight on Fontaine Avenue, which becomes Jefferson Park Avenue (JPA). At the fifth traffic light (including one flashing yellow light), bear right to stay on JPA. At the third traffic light after bearing right, turn right on Lee Street.

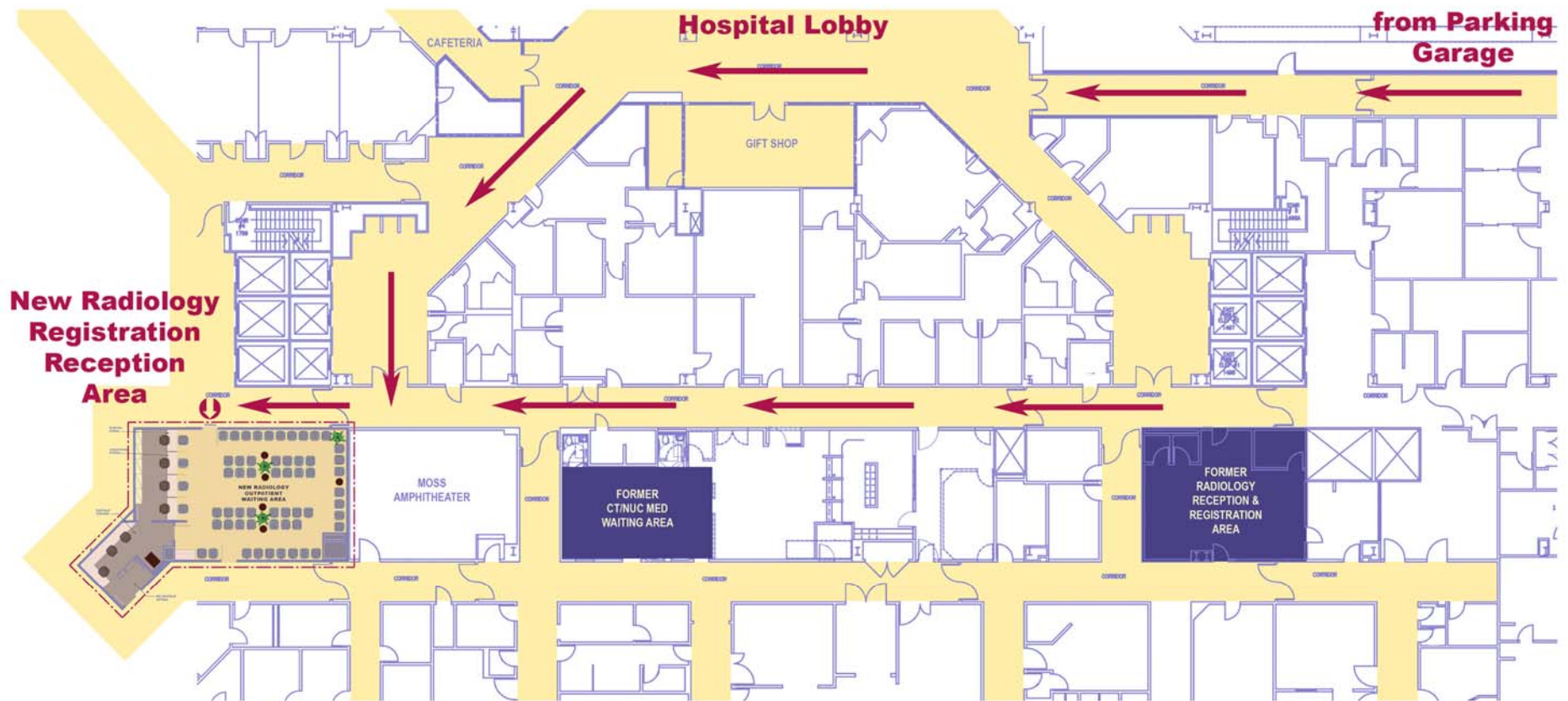
Directions from the South

From U.S. 29 North: Take the first exit past the Interstate 64 interchange (U.S. 29 Business). At the end of the exit ramp, turn right onto Fontaine Avenue. Stay straight on Fontaine Avenue, which becomes Jefferson Park Avenue (JPA). At the fifth traffic light (including one flashing yellow light), bear right to stay on JPA. At the third traffic light after bearing right, turn right on Lee Street.

Parking at the Medical Center

If you need assistance or are dropping off a patient for their appointment, pull into the right lane once you turn onto Lee Street and look for Medical Center greeters, who will be wearing blue and standing in front of the Northgate entrance.

If you are parking your own car, stay in the left lane after turning onto Lee Street. Follow signs and turn left into the Lee Street Garage. Make sure to bring your parking ticket with you to your appointment to get validation for free parking.



Arriving to Your Appointment

After parking, take the elevator or stairs to the ground floor of the parking garage, then cross Lee Street using the crosswalk in front of the garage (directly under a bridge). After crossing the street, walk in the door in front of you and turn right, walking toward the entrance to the cafeteria. Take the hallway to the left of the cafeteria entrance and walk past the West elevators, then turn right. The Radiology reception area will be the first door on your left.

Directions from Medical Center to Fontaine

From the Lee Street Garage, turn right on Lee Street. Turn left at the first traffic light onto Jefferson Park Avenue (JPA). At the third traffic light on JPA, turn left to remain on JPA. Follow road to third traffic light (including one flashing yellow light) and turn left on Ray C. Hunt Drive.

To reach 545 Ray C. Hunt Drive:

After turning onto Ray C. Hunt Drive, take a left at the top of the hill, then turn right at the first stop sign. 545 Ray C. Hunt Drive is the first building on the right.

To reach 415 Ray C. Hunt Drive:

After turning onto Ray C. Hunt Drive, turn right at the top of the hill, then make first left into the parking area for 415 Ray C. Hunt Drive.

Directions from Medical Center to Northridge

From the Lee Street Garage, turn right on Lee Street. Turn left at the first traffic light onto Jefferson Park Avenue (JPA). At the fourth traffic light, turn left on Ivy Road. Follow Ivy Road for about 2 miles, passing Boar's Head Inn on the left. After passing Boar's Head Inn, Northridge will be on your right.