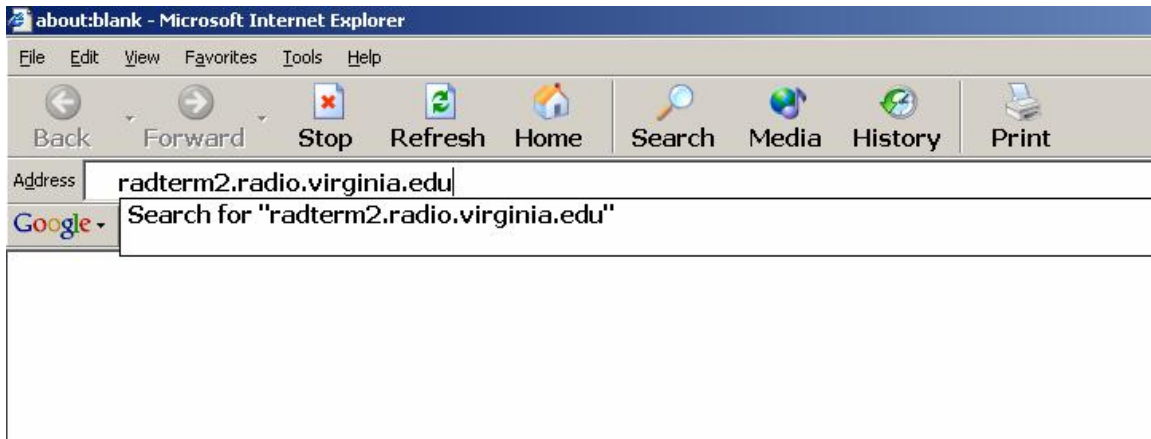


PowerScribe 4.7 Remote Access

1. Connect using your VPN token.
2. Open Internet Explorer (Not compatible with Firefox) and go to <http://radterm2.radio.virginia.edu>.



Authenticate using your Radiology userid and password. Be sure to place radiology\ before your userid.

- a. Ex: radiology\dmo3c



3. At the Status screen, click on one of the PowerScribe remote stations (if the screen is black it is available).

Microsoft Virtual Server 2005

Remote View	Virtual Machine Name	Status
	PowerScribe Remote 1	Runni
	PowerScribe Remote 2	Runni
	PowerScribe Remote 3	Runni
	PowerScribe Remote 4	Runni
	PowerScribe Remote 5	Runni

4. Allow the ActiveX controls to install (bubble at the top of Internet Explorer)
**requires Administrator rights on the PC.

"PowerScribe Remote 4" Remote Control - Microsoft Internet Explorer

Address: <http://radterm2.radio.virginia.edu:1024/VirtualServer/V5WebApp.exe?view=3&vm=PowerScribe%20Remote%204>

This site might require the following ActiveX control: 'Virtual Server VMRC ActiveX Client Control' from 'Microsoft Corporation'. [Click here to install...](#)

* Warning: SSL security is not enabled for this VMRC connection. *

Navigation

- Master Status
- Configure "PowerScribe Remote 4"

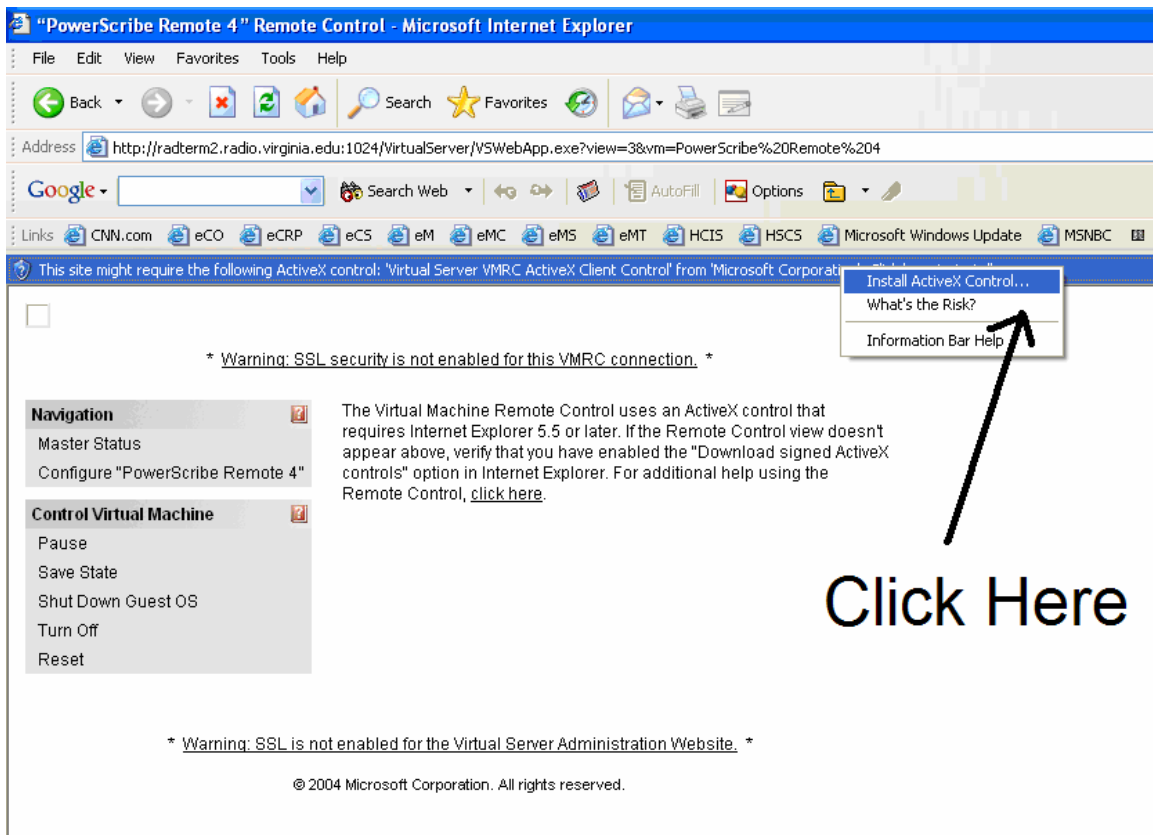
Control Virtual Machine

- Pause
- Save State
- Shut Down Guest OS
- Turn Off
- Reset

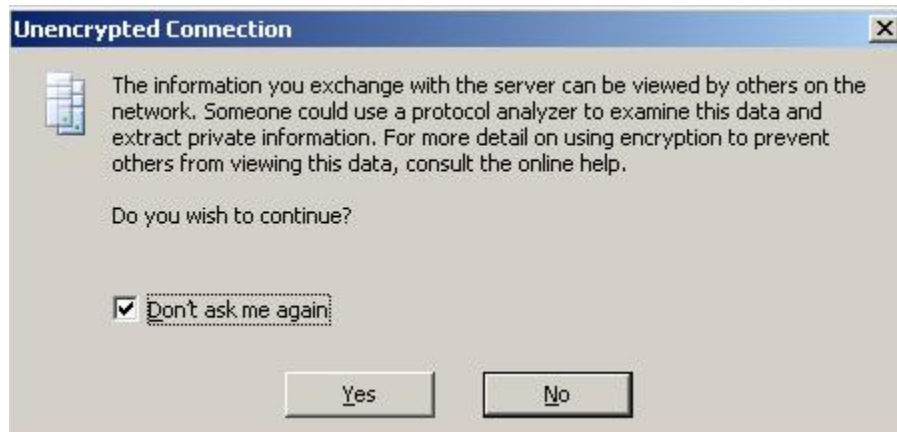
The Virtual Machine Remote Control uses an ActiveX control that requires Internet Explorer 5.5 or later. If the Remote Control view doesn't appear above, verify that you have enabled the "Download signed ActiveX controls" option in Internet Explorer. For additional help using the Remote Control, [click here](#).

Click Here

* Warning: SSL is not enabled for the Virtual Server Administration Website. *



5. Choose "Yes" and check the "Don't Ask Again" box for the next two windows that pop up.



6. Authenticate again using the same method as above.



7. Double click on the PowerScribe 4.7 icon.
8. BE SURE TO CLICK THE "REVIEW ONLY" OPTION BEFORE LOGGING INTO POWERSCRIBE.
9. Log into Powerscribe.
10. When finished, close Powerscribe and close your Internet Explorer browser by clicking "X" in upper right hand corner of window.