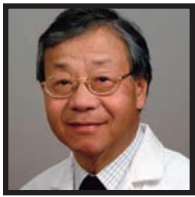


STAFF DIRECTORY



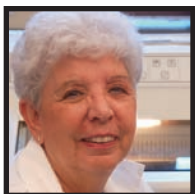
Ken Tung, M.D.
Director
Phone: (434) 924-9194,
e-mail: kst7k@virginia.edu



Sheri VanHoose, MLT (NCA)
Lab Manager
e-mail: slv4e@virginia.edu



Virginia Rubianes, MT (ASCP)
Lab Specialist II
email: vcr2c@virginia.edu




Joyce Nash
Lab Specialist, Sr.
email: jwn@virginia.edu



**6917 Suhling Wing
Old Medical School
Phone: (434) 924-9205**


UNIVERSITY
of VIRGINIA
SCHOOL of MEDICINE

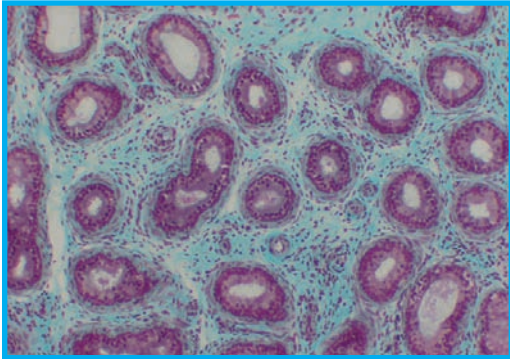


Research Histology Core

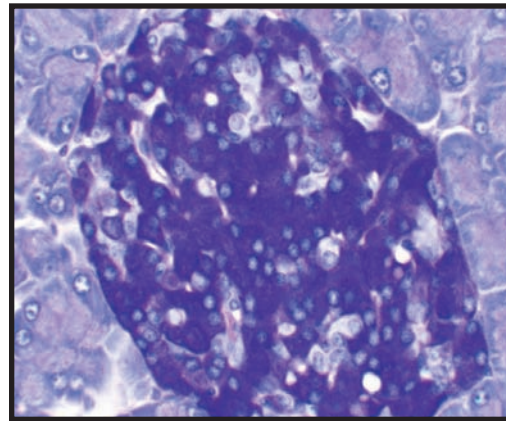
*... Providing high quality
histological services and
expertise to all
UVA investigators.*

Research Histology Core:

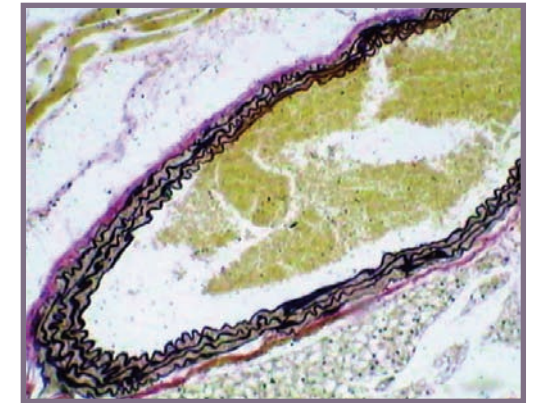
To provide high quality histological services and instruction to all UVA investigators in a cost-effective, value-added manner.



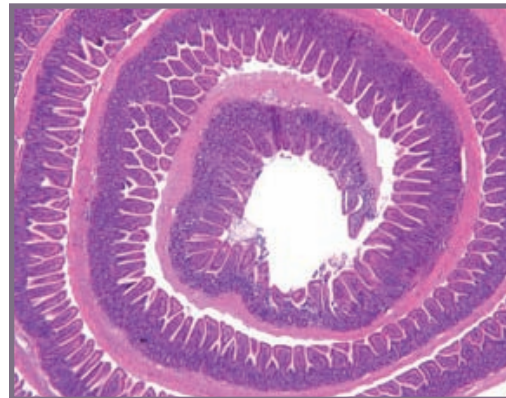
Gomori Trichrome



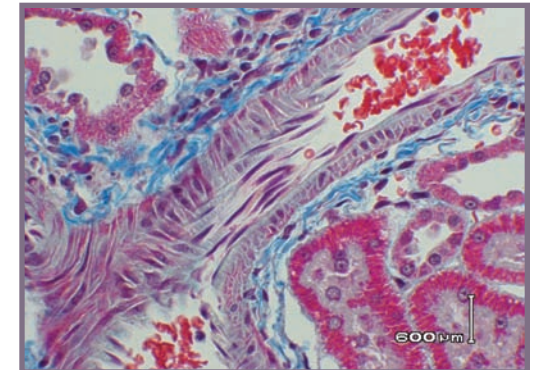
Aldehyde Fuchsin-pancreas



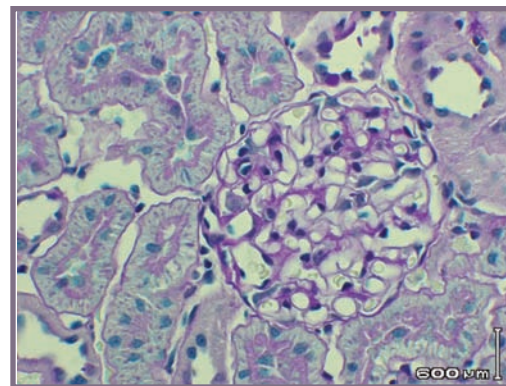
Elastin Stain



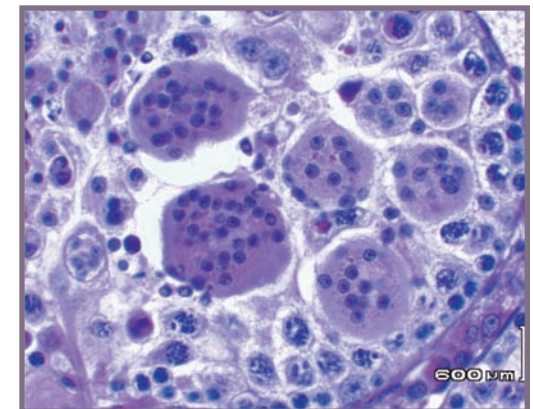
Swiss Roll



Masson's Trichrome



PAS rat kidney



H & E Testes

SERVICES:

- Tissue processing & embedding
- Paraffin and frozen tissue sections,
- Routine H&E
- Special stains including:
 - Gomori Trichrome
 - Masson's Trichrome
 - Aldehyde Fuchsin
 - Safranin O
 - Oil Red O
 - Periodic Acid Schiff (PAS)
 - Picrosirius Red
 - Elastin Stain
 - Giemsa
 - Toluidine Blue
- Slides for immunohistochemical stain
- Tunel stain coming soon