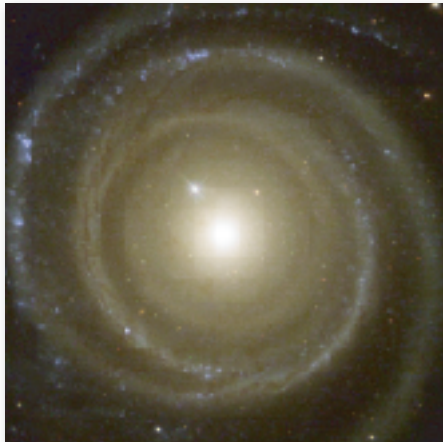


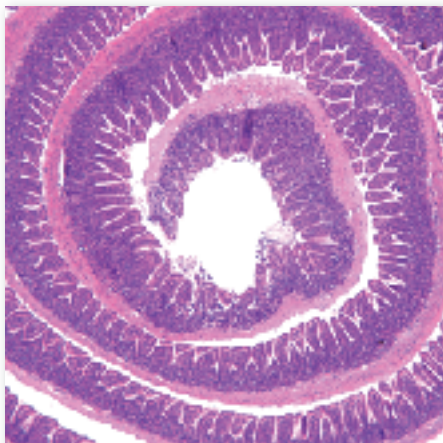
Immunogenetic Mechanisms of Intestinal Inflammation: **RENEWAL**



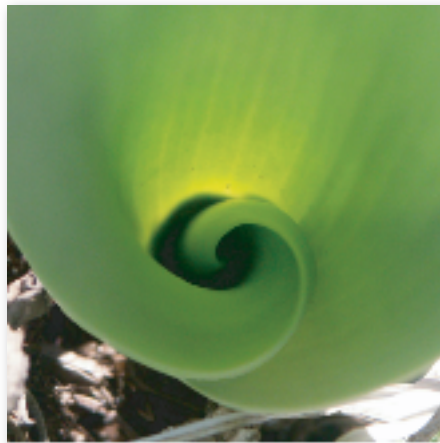
Credit: NASA and The Hubble Heritage Team (STScI/AURA)



Credit: Getty Images



Credit: Sharon Hoang



Credit: Anita Impagliazzo

Mitchell Kronenberg, PhD



President and Scientific Director,
La Jolla Institute for Allergy & Immunology

*Charting the pathways to colitis in a mouse model:
Understanding the roles of costimulatory molecules,
regulatory cells, and TNF family cytokines*

Thursday, June 24th at 12 noon
Jordan Hall Conference Center Auditorium, University of Virginia

PPG PROJECT LEADERS:

FABIO COMINELLI, MD, PHD, PRINCIPAL INVESTIGATOR: Role of cytokines in experimental ileitis

MARCIA MCDUFFIE, MD: Identification of predisposing genes in murine ileitis

STEVEN COHN, MD: Paneth cells and epithelial defenses in the pathogenesis of experimental ileitis

KLAUS LEY, MD: Mechanisms of cell adhesion and trafficking in experimental ileitis

THERESA PIZARRO, PHD: Epithelial innate responses in experimental ileitis

PETER ERNST, DVM: Lymphocyte interactions and regulatory T cell function in the pathogenesis of ileitis