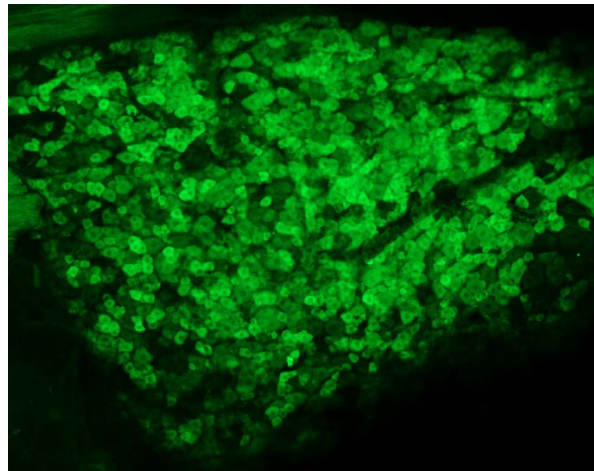
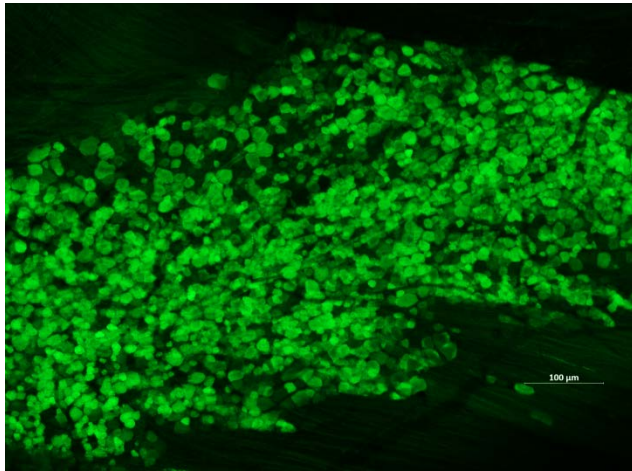




YU SHIN KIM, PHD

Assistant Professor & Principal Investigator
Neuroscience, Cell Biology, University of Texas
Medical Branch (UTMB), Galveston, TX



In Vivo Cellular Ca⁺⁺ Imaging to Study Chronic Pain

Hosted by: Bimal Desai, Assistant Professor of Pharmacology

Thursday, March 15, 2018 → 9:30 AM → Pinn Hall 1-17